



T2SERIES
1kVA - 3kVA



T2SERIES

1kVA - 3kVA

Launched in 2005 and superseding the highly regarded AEC KI Series UPS, the T2 Series benefits from the latest Microprocessor Control Unit (MCU) technology, and now offers even greater value for money.

The T2 is aimed at users that require protection from line voltage fluctuations and require a reliable and constant power source.

The T2 is a sophisticated unit utilizing full digital control technology. Available with power ratings of 1kVA, 2kVA and 3kVA, each has LCD display and audible alarm keeping you quickly updated on mains and battery status. The T2 is also fitted with an intelligent test button enabling a self-test routine, which also prevents the UPS from being inadvertently switched off.



2 | AEC | T2 SERIES

> Integrated Smartcard Slot

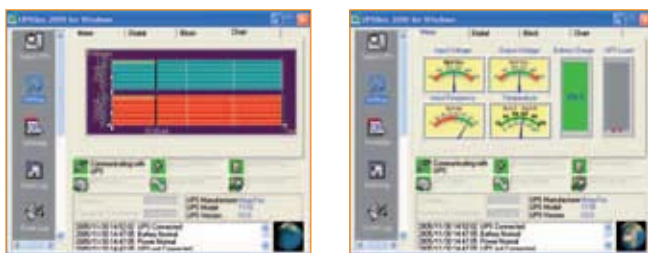
Fitted with an RS232 interface and USB port, which when used with the supplied software allows UPS status monitoring via connected PC.

Support for optional SNMP network adapter is also provided enabling full network management functions. Under mains failure the T2 provides sine wave computer grade power and will start a controlled shutdown (when software installed) of your operating system and connected hardware, completely protecting your data and working documents.

> UPS Management Software

The UPS management software is installed on a server or workstation connected to each UPS via the serial or optional USB port. Power failure, power restored, battery failure or eight events will be detected and the user informed. A shutdown will be initiated when the batteries are near to exhaustion or a technical problem occurs with the UPS. The UPS management software disconnects network connections, logs out users and closes open applications (subject to app/os support) before shutting down the operating system itself.

- Extensive log files
- Scheduled battery and inverter testing
- Scheduled system shutdown/re-start
- User-customisable commands and messages
- Multiple UPS control from a single computer
- Remote Console Command module for remote multiple server shutdown
- Internal SNMP sub-agent for integration into existing NMS (e.g. HP OpenView, CA Unicenter)



Screenshots of UPSilon Software

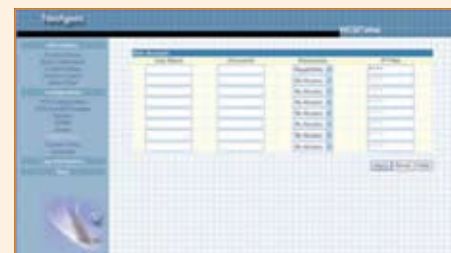
“The T2 is a sophisticated unit utilizing full digital control technology”

> Standard Properties

- Advanced mcu control technology, enhancing UPS performance
- Competitively priced
- High efficiency
- Power ratings of either 1kVA, 2kVA or 3kVA
- Fitted with RS232 interface
- USB - standard
- Optional snmp adapter available
- Conforms to all necessary safety and ce specifications
- LCD display
- Fast voltage protection, predicting mains failure
- Automatic voltage regulation, saving battery power (AVR)
- Low battery protection, preventing deep discharge
- Advanced battery management

> UPS Management Software

Our specialised optional UPS management software gives you the power to monitor and control your UPS from remote locations.



Screenshot of Net Agent Mini Software

T2SERIES

TECHNICAL SPECIFICATIONS

SPECIFICATIONS	1kVA	2kVA	3kVA
CAPACITY			
Maximum Capacity	1000VA/700W	2000VA/1400W	3000VA/2100W
INPUT			
Input Voltage Range	220/230/240VAC ± 25% Single Phase w/ Ground		
Input Frequency	44Hz - 56Hz		
OUTPUT			
Output Voltage	220/ 230/ 240 VAC		
Output Voltage Regulation	± 2%		
Output Frequency	46-54Hz		
Output THD	< 3%		
Efficiency (Battery mode)	82%		
Output Frequency (Battery mode)	50 ± 0.1 Hz		
Overload Capability (Normal mode)	Sustaining 5 min @ 100 - 200% 3 sec @ > 200%		
Overload Capability (Battery mode)	Sustaining 30 sec @ >100% 1 sec @ 150%		
BATTERY			
Battery Type	Sealed lead-acid maintenance-free 12VDC/ 7Ah per cell		
Numbers of Batteries	2 cells	4 cells	6 cells
Backup Time (at Full Load)	3 min	3 min	3 min
Recharge Time to 90%	< 8 hours (adjustable)		
INDICATION			
LCD	AC Mode, Battery Mode, Output Status, Battery Capacity, Overload, UPS Fault		
AUDIBLE ALARM			
Battery Mode	Long beeping		
Low Battery	Continuous beeping		
Overload	short beeping		
DEMENSIONS			
W x H x D (mm)	150 x 220 x 460	220 x 330 x 487	220 x 330 x 487
WEIGHT			
Net Weight w/ Battery (kgs)	19	32	42
ENVIRONMENTAL			
Operating Temperature	-5~40° C		
Relative Humidity	< 95% (Non-Condensing)		
Audible Noise	<45dBA @ 1 Meter		
COMMUNICATION PORT			
Standard RS232 USB or SNMP/HTTP (optional)			

